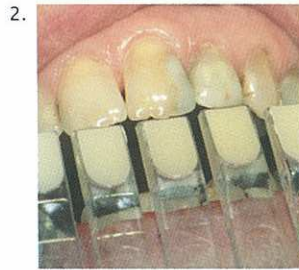


Quadrant Universal LC

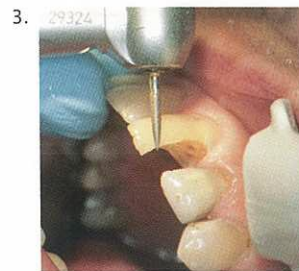
Application information for an Anterior restoration.



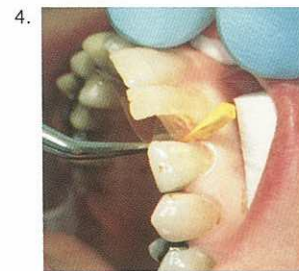
1. Discolored restoration in 21 element.



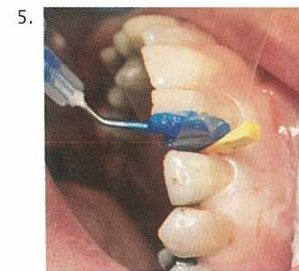
2. Define shade with Quadrant Universal LC shade guide, made of original composite with VITA shades.



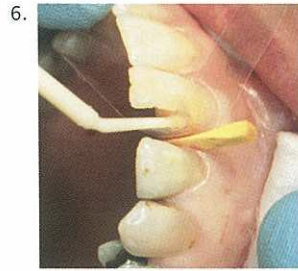
3. Prepare the cavity according to the general directions for composite restorations.



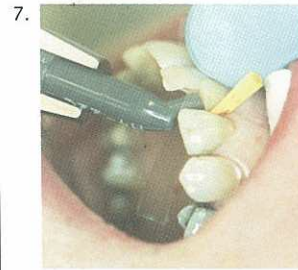
4. Clean and dry the preparation. Apply wedges and matrixband.



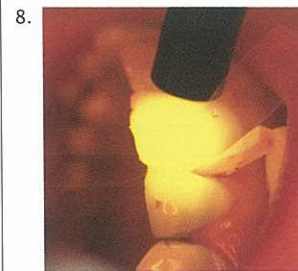
5. Apply Quadrant Total Etch onto enamel and dentin and leave for 15-30 seconds. Rinse thoroughly for at least 5 seconds. Remove excess moisture with a gentle stream of air.



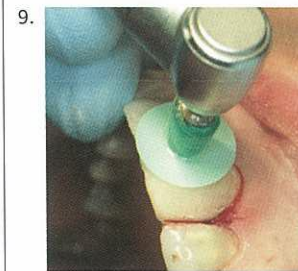
6. Apply 3 layers of Quadrant Uni-1-Bond. Wait for 15 seconds and light cure for 20 seconds.



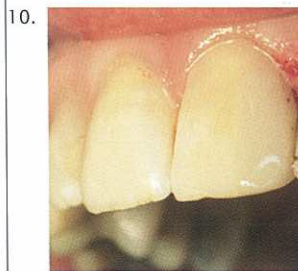
7. Apply Quadrant Universal LC in layers of max. 2mm in the necessary shade(s). Quadrant Universal LC is also available in syringes.



8. Light cure every layer for 20 seconds (for shade OA2: 40 seconds).



9. Finish with a fine diamond, and polish with flexible discs and silicon polishers.



10. Result after restoration: aesthetically perfect.

Quadrant, from Cavex, offers a carefully matched range of adhesive materials that provide the appropriate solution for every "quadrant". It includes light- and chemical-cured composites, bonding systems, core build-up material, adhesive cement, a desensitizing primer and a caries indicator. The Q-System is specially developed for the dental practice. For dental use only.




CAVEX


Cavex Holland BV
Harmenjansweg 19
P.O. Box 852
2003 RW Haarlem
The Netherlands


T +31 23 530 77 00
F +31 23 535 64 82
dental@cavex.nl
www.cavex.nl

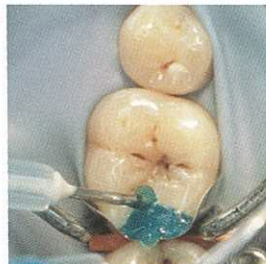
Quadrant Universal LC


Application information for a **Posterior** restoration.


- 


1. Distal cavity at the 46. Define shade before preparation.
- 


2. Prepare the cavity according to the general directions for composite restorations.
- 


3. Clean and dry the preparation. Apply wedges and matrixband. The use of rubberdam is recommended to create a clean and dry area.
- 

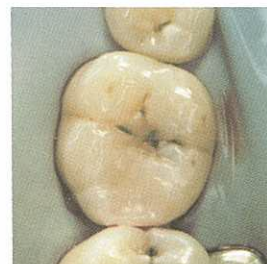
4. Apply Quadrant Total Etch onto enamel and dentin and leave for 15-30 seconds. Rinse thoroughly for at least 5 seconds. Remove excess moisture with a gentle stream of air.
- 

5. Apply 3 layers of Quadrant Uni-1-Bond. Wait for 15 seconds and light cure for 20 seconds.
- 

6. Apply Quadrant Universal LC in layers of max. 2mm in the necessary shade(s).
- 

7. Contour the surface of the last layer.
- 

8. Light cure every layer for 20 seconds.
- 

9. Finish with a fine diamond, and polish with flexible discs and silicon polishers.
- 

10. Result after restoration: aesthetic and durable.